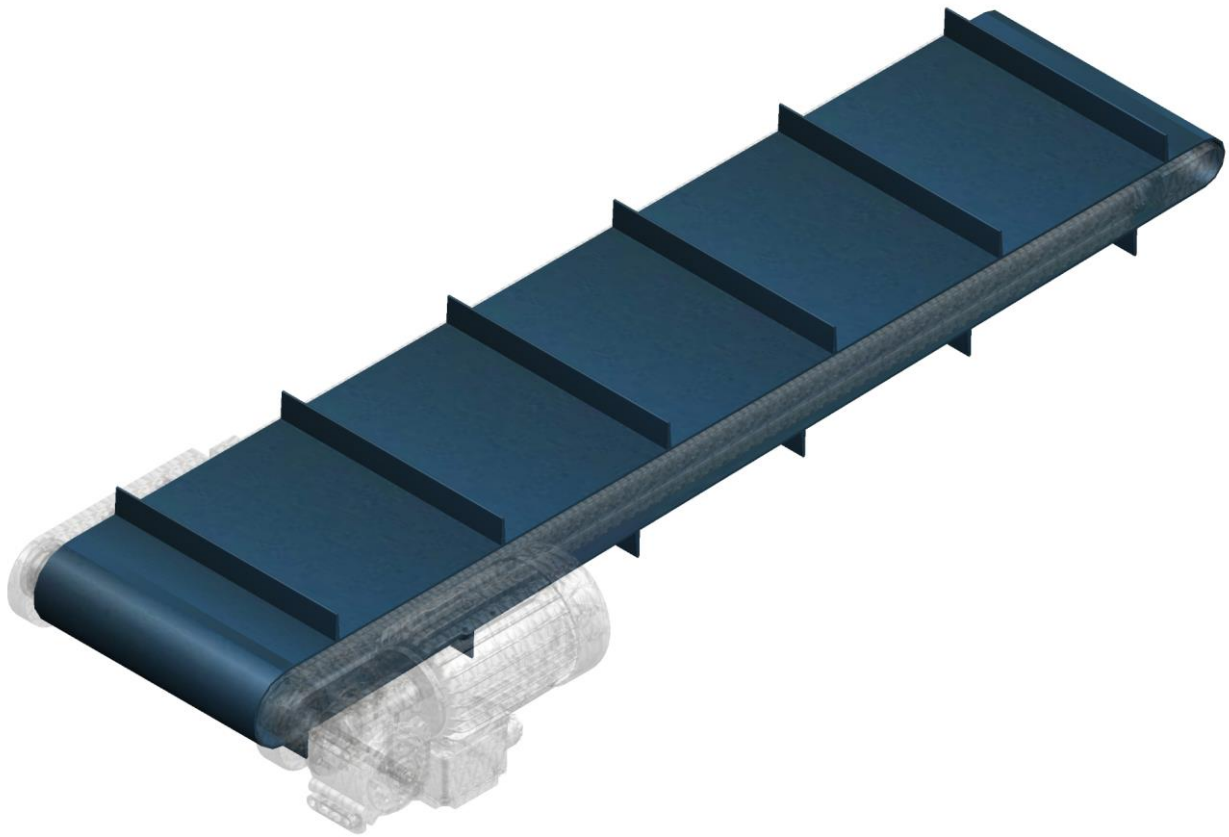


Operating instructions

Belt conveyor - straight

Typ: IL

Module: Follower cleat



Revision: 01

English (US) (Englisch)

Translation of the original document

EN-BA-IL-01

04.03.2025



MTF Technik
Hardy Schürfeld GmbH & Co. KG
Stadionstraße 8
D-51702 Bergneustadt

Tel.: +49 2261 9431-0
Fax: +49 2261 9431-31
info@mtf-technik.de
www.mtf-technik.de

© 2025 MTF Technik Hardy Schürfeld GmbH & Co. KG. All rights reserved.

The copyright for this documentation remains with MTF Technik Hardy Schürfeld GmbH & Co. KG. The documentation contains information of a technical nature which may not be copied or distributed, neither in whole or in part, nor utilized or passed on to third parties for the purpose of competition without permission.

1	General	4
2	Product description	4
	2.1 Designations of the belt cover	4
	2.2 Follower cleat	6
3	Safety	8
	3.1 Safety instructions	8
4	Keywords index	9
5	List of figures	10
6	Appendix	11

1 General

Operating instructions module: Follower cleat is an add-on to the operating instructions of the belt conveyor – straight, type: IL and is only valid in conjunction with the main document.

This document relates exclusively to follower cleats and information relating to their use.

2 Product description

2.1 Designations of the belt cover

The top of the belt is designed dependent on the transported material. The following figure shows an overview of possible belt designs.

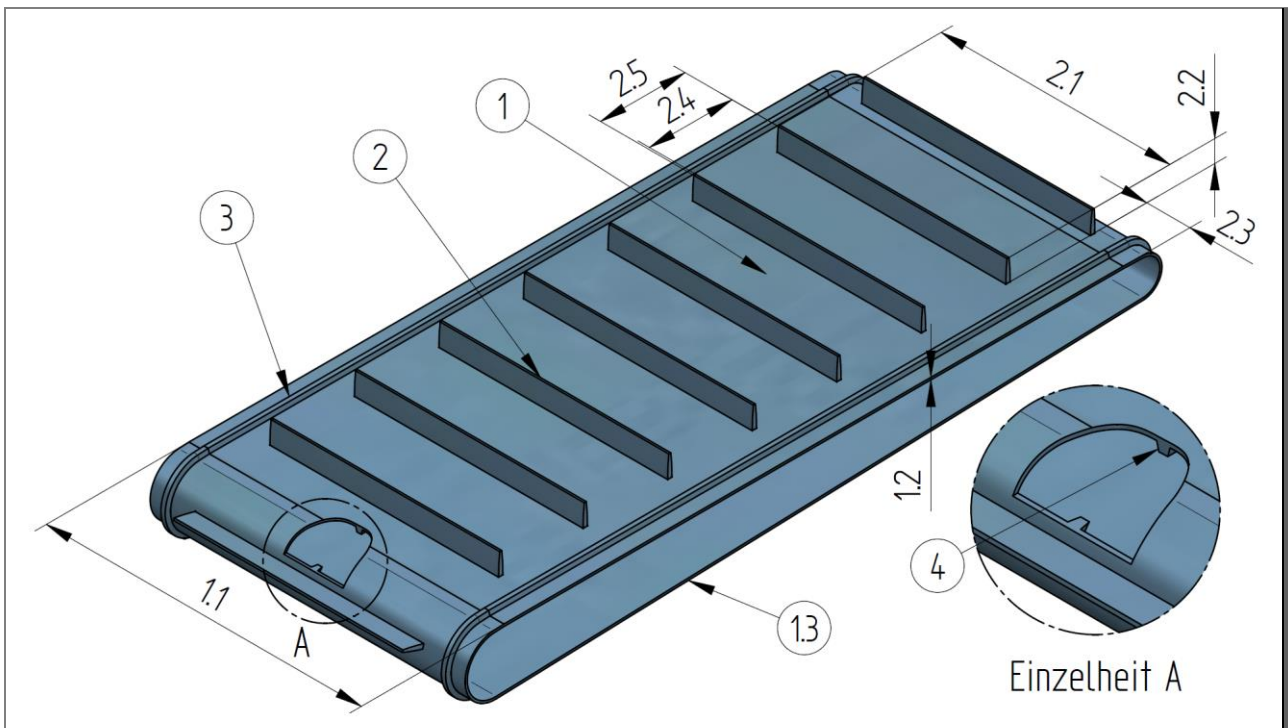


Fig. 1: Designations of the belt designs

- | | | | |
|-----|---------------------|-----|-----------------------------------|
| 1 | Belt | 2.2 | Cleat height |
| 1.1 | Belt width | 2.3 | Lateral clearance (on both sides) |
| 1.2 | Belt thickness | 2.4 | Cleat shelf width |
| 1.3 | Endless belt length | 2.5 | Cleat distance (center to center) |
| 2 | Follower cleat | 3 | Carrying side-v-guide |
| 2.1 | Cleat length | 4 | Running side-v-guide |

External reference



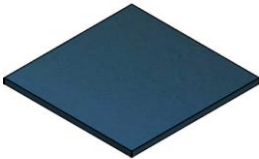
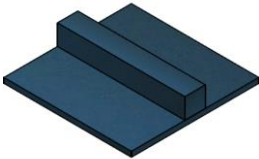
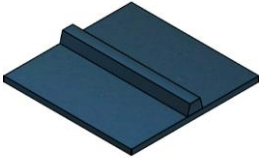
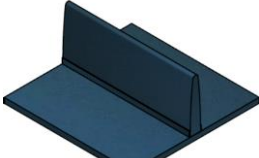
The belt no. and the properties of the belt are contained in the order confirmation (see "Belt cover no.").

2.2 Follower cleat

Follower cleats are essentially responsible for the correct operation of the entire conveyor belt. They are primarily used for conveying or delimiting transported material. The cleats mainly comprise welded or glued on strips, that are arranged perpendicular to the conveying direction. They reduce fall back of the transported material.

The endless belt length is divided by the number of cleats, so that in general there is a uniform cleat distance. From this uniform cleat distance a cleat compartment is created dependent on the cleat form.

The form of the follower cleats varies dependent on the conveyed material. The various cleat heights are dependent on the belt selection.

Cleat image	Cleat form	Cleat height [mm] (dependent on the selected belt)
	Without	
	[R] Rectangular	4; 5
	[TR] Trapezoid	8; 10
	[T] T-form Round	20; 30; 40; 50; 60

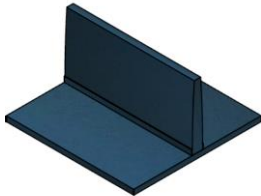
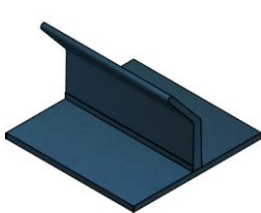
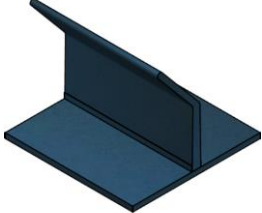
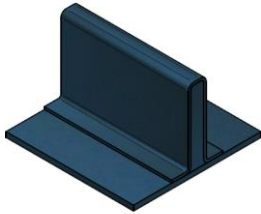
Cleat image	Cleat form	Cleat height [mm] (dependent on the selected belt)
	[T] T-form Straight	25, 35
 	[TG] T-form; bent	30; 40
	[SG] Closed loop	20; 25; 30; 35; 40; 50; 60

Fig. 2: Cleat forms and heights

3 Safety

Only specialized personnel with proven qualification are authorized to perform work on the system. Compliance with the following is mandatory:

- this instruction manual
- all other instruction manuals pertaining to the system (further applicable documents, including the documents provided by the suppliers)
- the applicable local regulations and laws.

3.1 Safety instructions

These instructions must be observed in the start-up, operation, troubleshooting and maintenance phases:

CAUTION

Risk of crushing (with drive positioned underneath and cleated belt)

On the lower belt run there is a risk of crushing between the motor and cleats as they pass by.

- Never reach into the area below the drive motor for as long as the motor is switched on or is not secured to prevent switching back on.

CAUTION

Risk of crushing and scraping

The conveyor inlet area is reached into from the covers or hoppers, limbs can be crushed or scraped.

- Do not reach into the inlet area.

4 Keywords index

B

Belt (belt cover) 5
 Belt no./Belt type 5
 Belt thickness 5
 Belt width 5
 Endless belt length 5

C

Cleat
 Cleat height 6

F

Follower cleat 5
 Cleat distance 5
 Cleat form 6
 Cleat height 5
 Cleat length 5
 Cleat shelf width 5
 Lateral clearance 5

V

V-guide 5

5 List of figures

Fig. 1: Designations of the belt designs.....	4
Fig. 2: Cleat forms and heights.....	7

6 Appendix

This space is reserved for your notes: